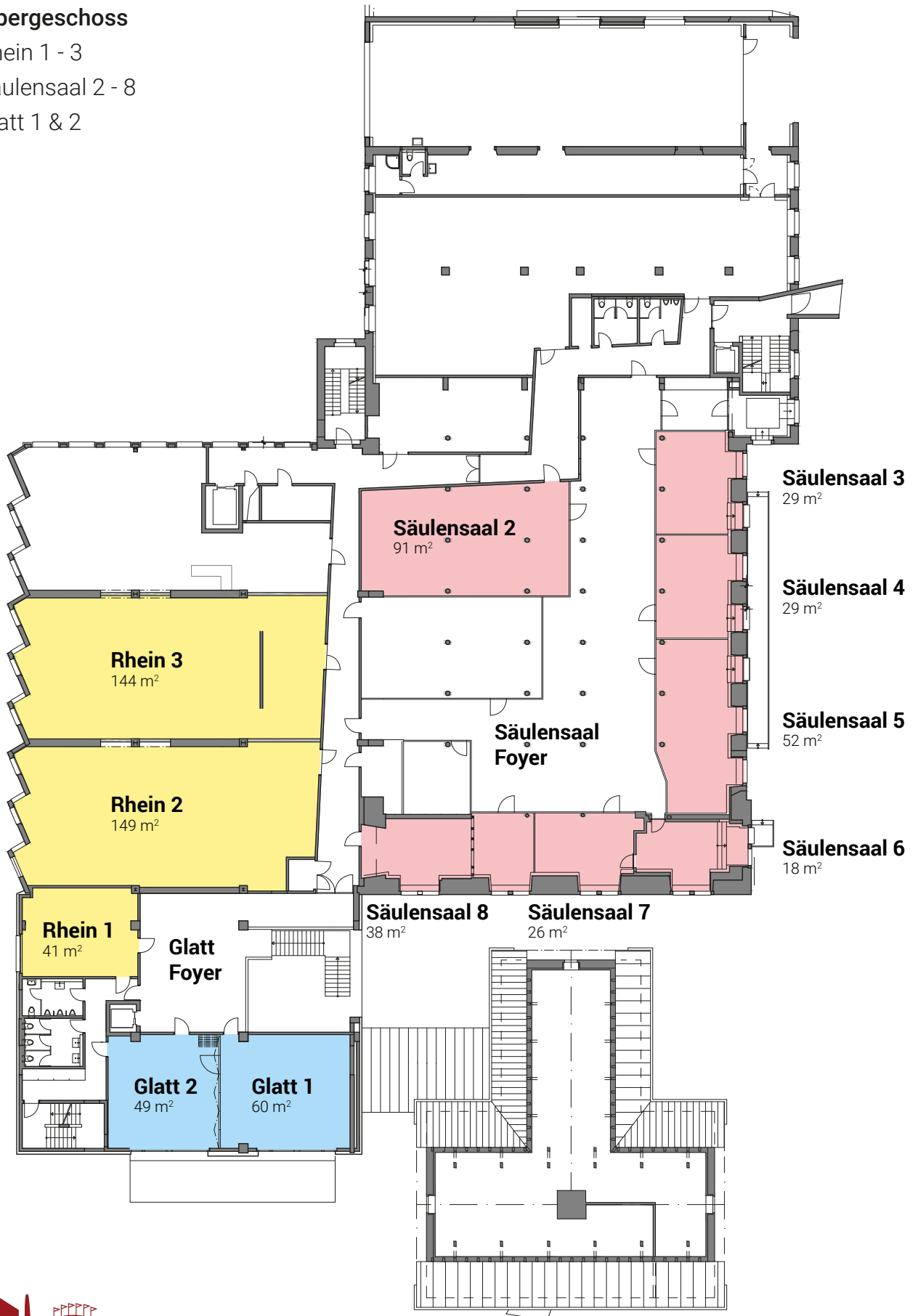


Lageplan 1. OG

1. Obergeschoss

- Rhein 1 - 3
- Säulensaal 2 - 8
- Glatt 1 & 2



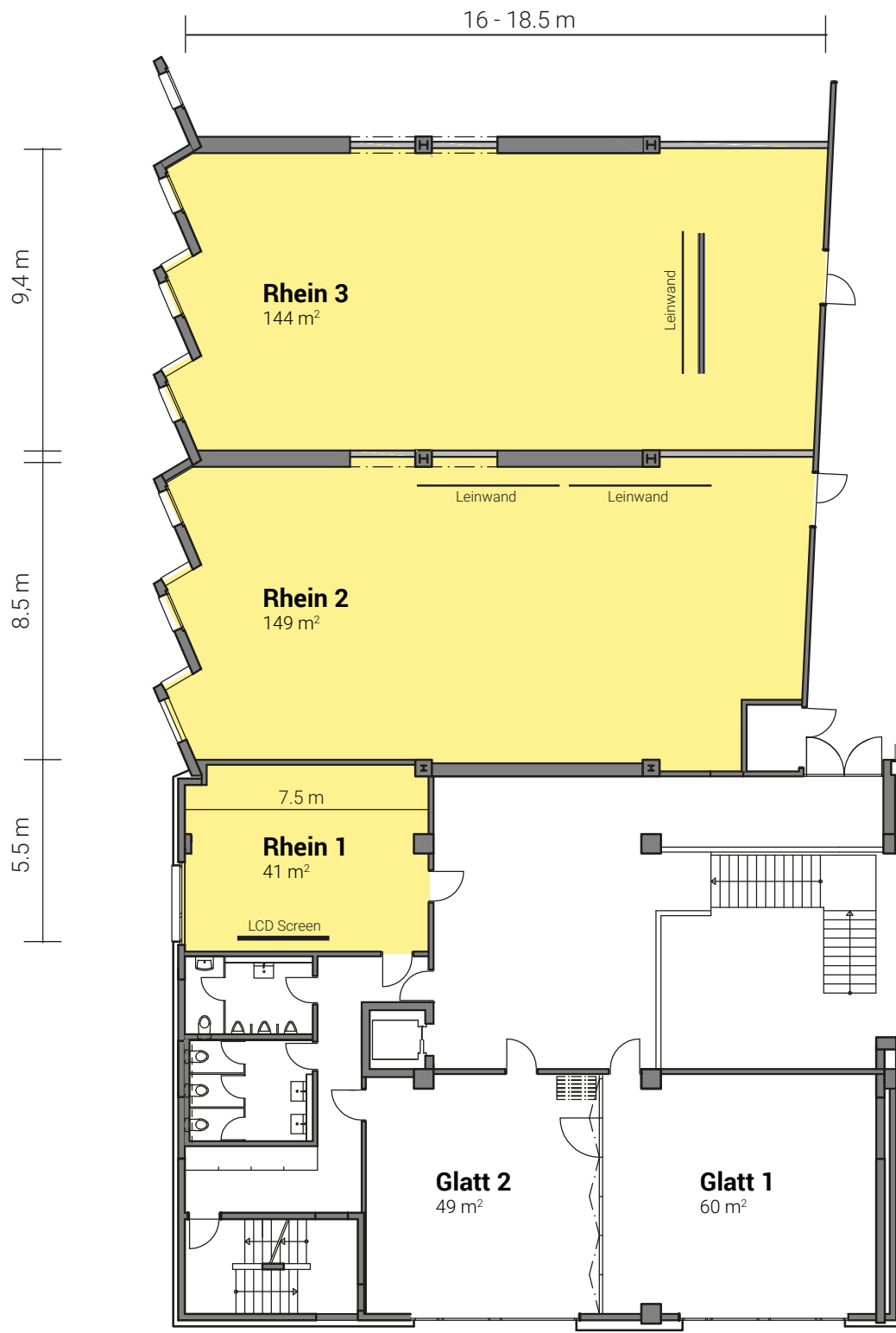
riverside

Seminar- und Eventhotel

Seminarräume Rhein 1 - 3

1. Obergeschoss

■ Rhein 1 - 3



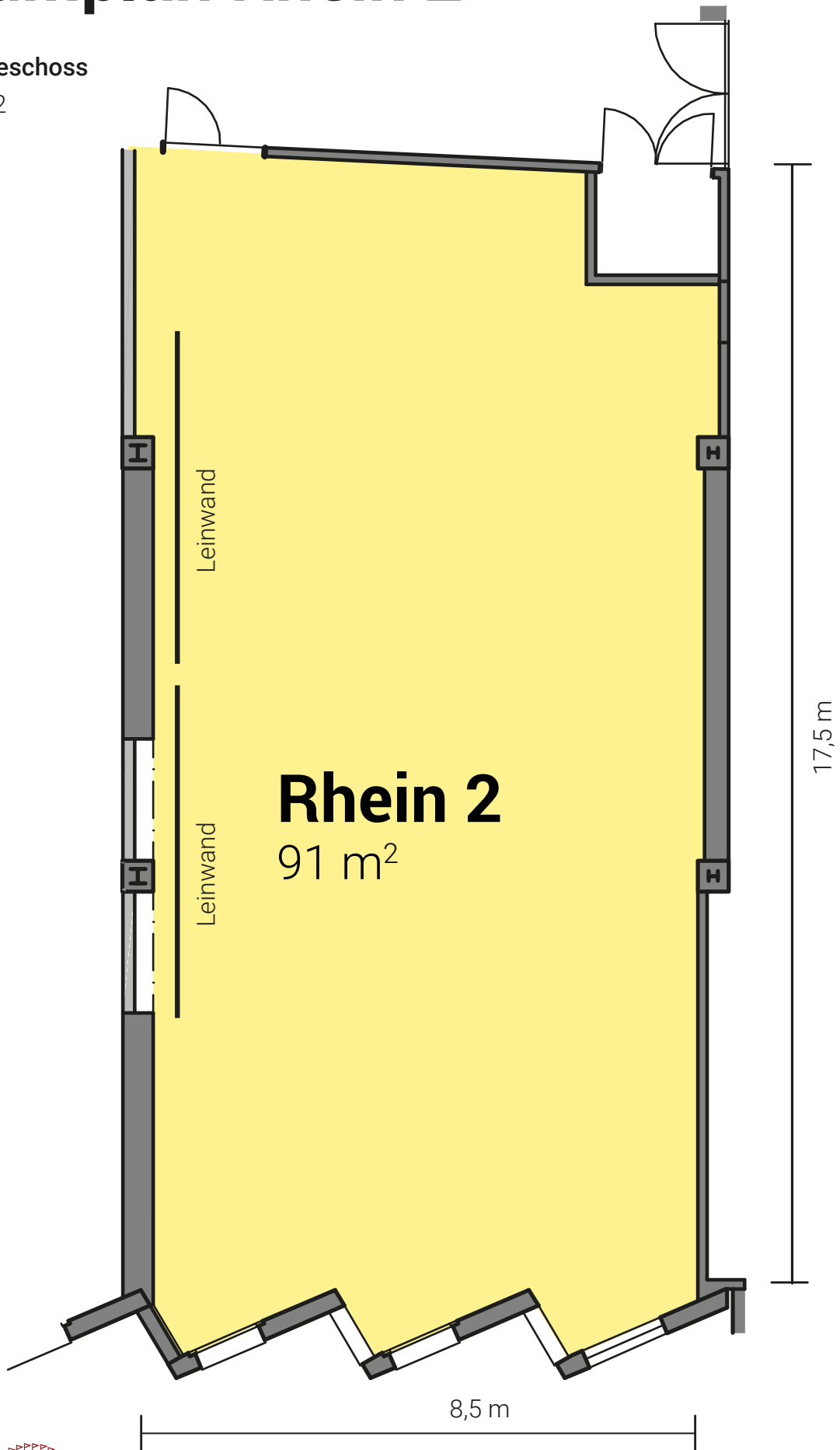
riverside

Seminar- und Eventhotel

Raumplan Rhein 2

1. Obergeschoss

■ Rhein 2



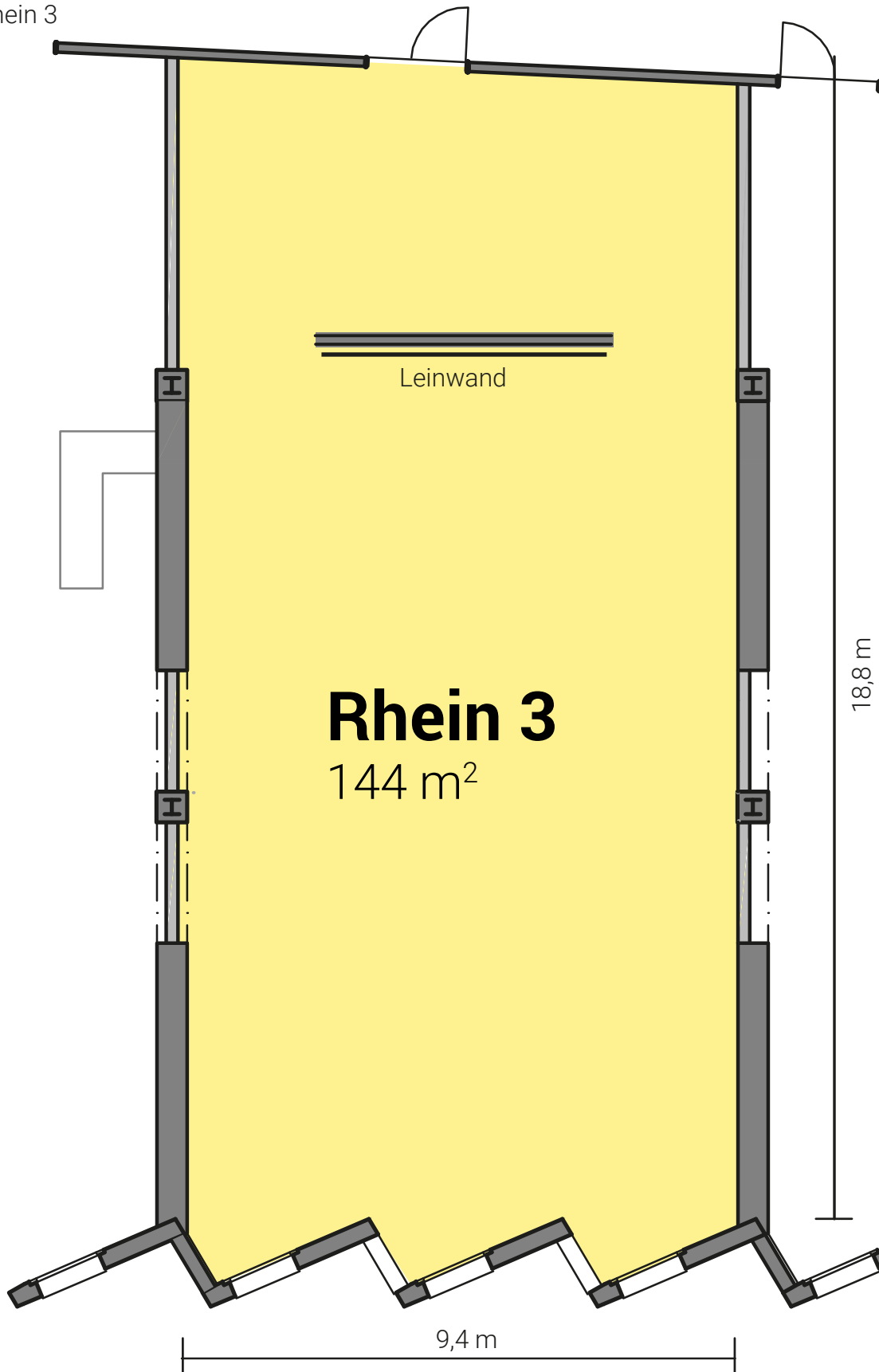
riverside

Seminar- und Eventhotel

Raumplan Rhein 3

1. Obergeschoss

■ Rhein 3



riverside

Seminar- und Eventhotel