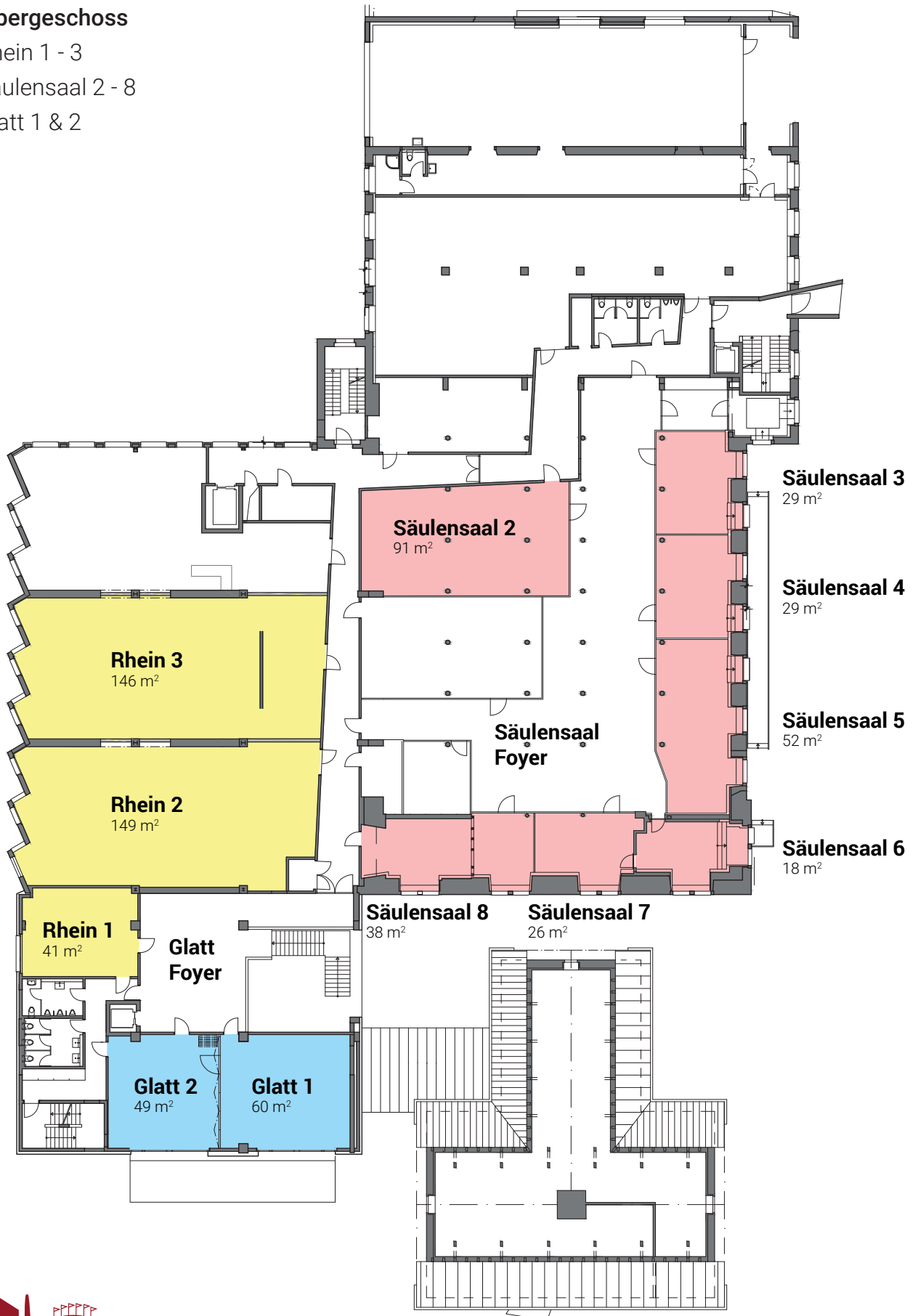


Lageplan 1. OG

1. Obergeschoss

- Rhein 1 - 3
- Säulensaal 2 - 8
- Glatt 1 & 2



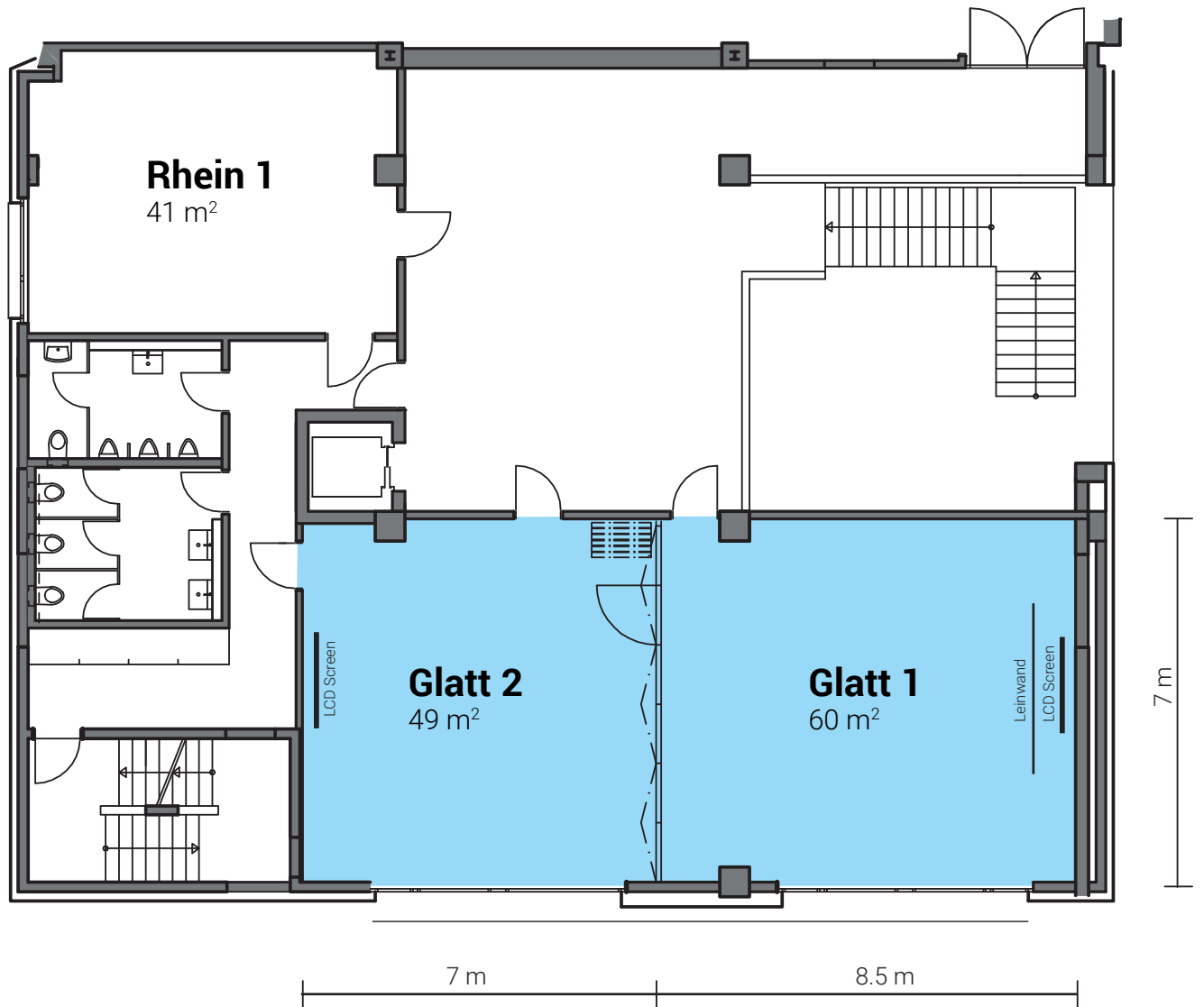
riverside

Seminar- und Eventhotel

Raumplan Glatt 1 & 2

1. Obergeschoss

- Glatt 1 & 2



riverside

Seminar- und Eventhotel