

# Meetings & Conferences in the countryside.



**riverside**

Seminar- und Eventhotel



## riverside

Spinnerei-Lettenstrasse  
8192 Zweidlen-Glattfelden

T +41 43 500 92 92  
[www.riverside.ch](http://www.riverside.ch)



**Are you looking for a special location for your conference or meeting? With ambience and style? Look no further!**

The former yarn-spinning factory combines nostalgia and innovation to create a unique atmosphere where people meet, network and develop new ideas. The riverside offers a wide range of opportunities to realise successful conferences, workshops, trainings or events.

### Facts & Figures

- |                     |                                     |
|---------------------|-------------------------------------|
| ✓ 450 capacity      | ✓ 300 free of charge parking spaces |
| ✓ 96 hotel rooms    | ✓ 17 Meeting rooms                  |
| ✓ 10 Bowling alleys | ✓ 3 Restaurants                     |
| ✓ 1 Car exhibition  | ✓ Shuttle Service                   |

The Event team is happy to support you in planning your conference or meeting from original concepts through to a successful performance on the day.



Pascal Müller  
Head of Meeting & Events  
seminare@riverside.ch  
T +41 43 500 92 92



# Meetings in the countryside

The Greenday Delegate Rate includes all relevant services for a successful meeting.

## Greenday ½-Day Delegate Rate

CHF 85 p.P. / day

Meeting room with natural daylight

1 Projector & screen or LCD screen

1 Flipchart

1 Pinboard

1 Moderation kit

1 Coffee break  
(Nespresso coffee, tea, orange juice, fruit basket, home-made bread rolls)

3 course lunch menu incl. mineral water and coffee  
(standing buffet lunch available from 15 delegates, surcharge of CHF 10.00 per person applies)

Mineral water inside the meeting room (half day)

Free WIFI: high speed internet access with individual login (50Mbps/s)

Free of charge parking spaces for all delegates

Technical support & conference team onsite to support you

## Greenday Delegate Rate

CHF 115 p.P. / day

Bestseller

Meeting room with natural daylight

1 Projector & screen or LCD screen

1 Flipchart

1 Pinboard

1 Moderation kit

2 Coffee breaks  
(Nespresso coffee, tea, home-made bread rolls in the morning, home-made pastries in the afternoon)

3 course lunch menu incl. mineral water and coffee  
(standing buffet lunch available from 15 delegates, surcharge of CHF 10.00 per person applies)

Mineral water inside the meeting room (full day)

Free WIFI: high speed internet access with individual login (50Mbps/s)

Free of charge parking spaces for all delegates

Technical support & conference team onsite to support you

## Greenday Light Delegate Rate

CHF 98 p.P. / day

Meeting room with natural daylight

1 Projector & screen or LCD screen

-

-

-

2 Coffee breaks  
(Nespresso coffee, tea, home-made bread rolls in the morning, home-made pastries in the afternoon)

2 course lunch menu incl. mineral water and coffee

Mineral water inside the meeting room (full day)

Free WIFI: high speed internet access with individual login (50Mbps/s)

Free of charge parking spaces for all delegates

Technical support & conference team onsite to support you

# Audio/Visual Equipment

## Conference technology

Projector & screen or LCD screen, 1 flipchart, 1 pinboard, 1 moderation kit, pads and pens available in each meeting room and included in the Daily Delegate Rate. Additional AV equipment available upon request.

## Additional equipment – charges per day/ item

- Pinboard	CHF 30.–
(covered with paper on both sides)	CHF 35.–
- Flipchart with paper & pens	CHF 30.–
- Moderation kit	CHF 40.–
- Presenter incl. laser pointer	CHF 15.–
- Lectern	CHF 20.–
- Laptop	CHF 100.–
- Overhead projector	CHF 50.–
- Projector	CHF 150.–

## Audio/Visual Equipment

- Microphones (max. 4 simultaneously) at “Spinnereisaal”	je CHF 150.–
- Microphone system with 4 microphones and mixer console	CHF 750.–
- Conference telephone	CHF 120.–
- Microphones in all other meeting rooms or for more than 4 microphones – price upon request	

## Miscellaneous

Above listed prices apply to riverside equipment. All equipment rented externally is subject to the third party supplier's prices.

Additional logistical services are to be agreed and arranged prior to the event and charged based on consumption. Technical support or setup changes on the day will be charged at CHF 100.00 per hour.

# Our meeting rooms

unique and versatile with natural daylight



Classroom



U shape



Theatre



Block table

## Spinnereisaal 1+2

up to 335 persons | 310 m<sup>2</sup>



130

tbd

335

tbd

▶ Double projection

▶ Integrated 4 channel microphone system, sound system

## Spinnereisaal 1

up to 95 persons | 128 m<sup>2</sup>



36

20

95

30

▶ Projector and screen

▶ Sound system

## Spinnereisaal 2

up to 170 persons | 189 m<sup>2</sup>



72

28

170

50

▶ Double projection

▶ Integrated 4 channel microphone system, sound system

## Glatt 1+2

up to 88 persons | 109 m<sup>2</sup>



48

24

88

▶ Projector and screen  
57" LCD Screen

▶ Sound system

# Our meeting rooms

unique and versatile with natural daylight



Classroom



U shape



Theatre



Block table

## Glatt 1

up to 36 persons | 60 m<sup>2</sup>



24

16

45

20



Projector and screen  
57" LCD-Screen



Sound system

## Glatt 2

up to 36 persons | 49 m<sup>2</sup>



18

12

36

16



57" LCD-Screen



Sound via LCD screen

## Glatt 3

up to 120 persons | 186 m<sup>2</sup>



36

24

120

30



Projector and screen



Sound system

## Rhein 1

up to 27 persons | 41 m<sup>2</sup>



12

8

27

10



57" LCD-Screen



Sound via LCD screen

# Our meeting rooms

unique and versatile with natural daylight



Classroom



U shape



Theatre



Block table

## Rhein 2

up to 100 persons | 149 m<sup>2</sup>



40

22

100



Double projection



Sound system

## Rhein 3

up to 100 persons | 144 m<sup>2</sup>



42

26

100



Projector



Sound system

## Säulensaal 2

up to 80 persons | 91 m<sup>2</sup>



22

20

80



Projector



Sound system

## Säulensaal 3

up to 10 persons | 29 m<sup>2</sup>



-

-

-

10



57" LCD-Screen



Sound via LCD screen

# Our meeting rooms

unique and versatile with natural daylight



Classroom



U shape



Theatre



Block table

## Säulensaal 4

up to 10 persons | 29 m<sup>2</sup>



-

-

-

10



57" LCD-Screen



Sound via LCD screen

## Säulensaal 5

up to 30 persons | 52 m<sup>2</sup>



12

14

30

14



Projector and screen



upon request

## Säulensaal 6

up to 6 persons | 18 m<sup>2</sup>



-

-

-

6



57" LCD-Screen



Sound via LCD screen

## Säulensaal 7

up to 10 persons | 26 m<sup>2</sup>



-

-

-

10



57" LCD-Screen



Sound via LCD screen

# Our meeting rooms

unique and versatile with natural daylight



Classroom



U shape



Theatre



Block table

## Säulensaal 8

up to 10 persons | 38 m<sup>2</sup>



-

-

-

10



57" LCD-Screen



Sound via LCD screen

## Lodge 1

up to 80 persons | 145 m<sup>2</sup>



36

22

80

20



Projector and screen



Sound system

## Lodge 2

up to 80 persons | 145 m<sup>2</sup>



36

22

80

20



Projector and screen



Sound system

## Kämmereisaal

up to 450 persons | 506 m<sup>2</sup>



320



140

-

450

-

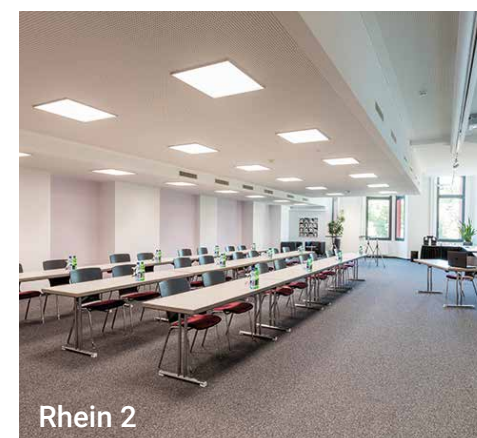


Projector and screen



Integrated 4 channel  
microphone system,  
sound system

	m <sup>2</sup>					
Meeting room	Size	Classroom	U Shape	Theatre	Block table	Banquet
<b>Spinnereisaal 1+2</b>	310 m <sup>2</sup>	130	-	335	-	-
<b>Spinnereisaal 1</b>	128 m <sup>2</sup>	36	20	95	30	-
<b>Spinnereisaal 2</b>	189 m <sup>2</sup>	72	28	170	50	-
<b>Glatt 1+2</b>	109 m <sup>2</sup>	48	24	88	t.b.d.	-
<b>Glatt 1</b>	60 m <sup>2</sup>	24	16	45	20	-
<b>Glatt 2</b>	49 m <sup>2</sup>	18	12	36	16	-
<b>Glatt 3</b>	186 m <sup>2</sup>	36	24	120	30	-
<b>Rhein 1</b>	41 m <sup>2</sup>	12	8	27	10	-
<b>Rhein 2</b>	149 m <sup>2</sup>	40	22	100	-	-
<b>Rhein 3</b>	144 m <sup>2</sup>	42	26	100	-	-
<b>Säulensaal 2</b>	91 m <sup>2</sup>	22	20	80	-	-
<b>Säulensaal 3</b>	29 m <sup>2</sup>	-	-	-	10	-
<b>Säulensaal 4</b>	29 m <sup>2</sup>	-	-	-	10	-
<b>Säulensaal 5</b>	52 m <sup>2</sup>	12	14	30	14	-
<b>Säulensaal 6</b>	18 m <sup>2</sup>	-	-	-	6	-
<b>Säulensaal 7</b>	26 m <sup>2</sup>	-	-	-	10	-
<b>Säulensaal 8</b>	38 m <sup>2</sup>	-	-	-	10	-
<b>Lodge 1</b>	145 m <sup>2</sup>	36	22	80	20	-
<b>Lodge 2</b>	145 m <sup>2</sup>	36	22	80	20	-
<b>Kämmereisaal</b>	506 m <sup>2</sup>	140	-	450	-	320
<b>Car exhibition</b>	840 m <sup>2</sup>	20	20	120	-	-



## Overview/ Meeting rooms



Spinnereisaal 2



Glatt 2



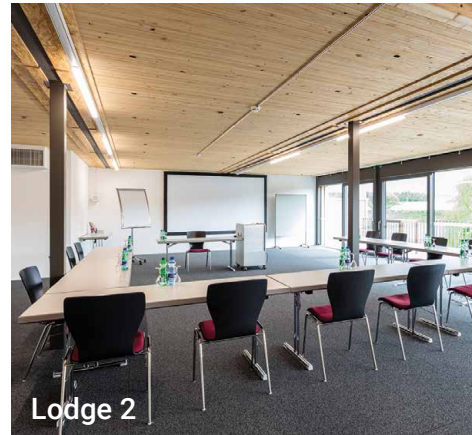
Säulensaal 5



Spinnereisaal 1+2



Spinnereisaal 1



Lodge 2



Säulensaal 6



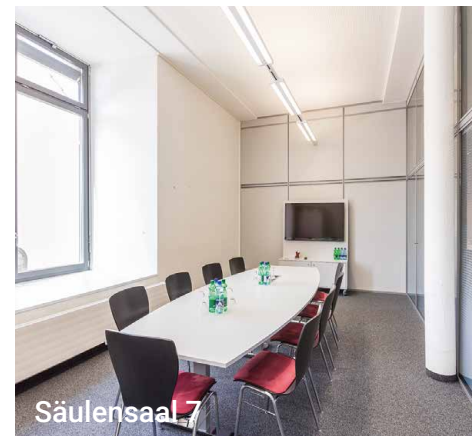
Glatt 1+2



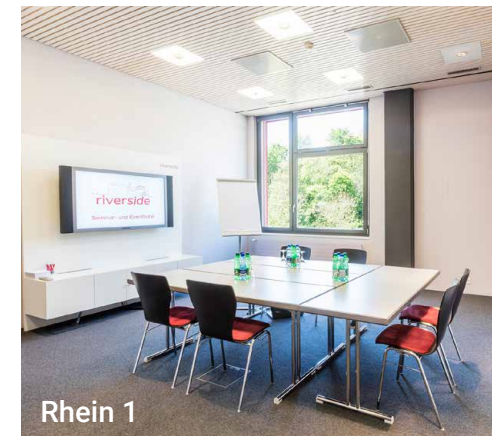
Glatt 3



Säulensaal 4



Säulensaal 7



Rhein 1

# Culinary delights

## Kesselhaus



## Thaigarden



Enjoy authentic Thai cuisine at the riverside's «Thaigarden» situated at the elegant glass pavilion. From delicious Currys to tasteful hot wok dishes, you can indulge in a variety of flavours and ingredients.

Restaurant «Kesselhaus» and «Turbinenstube» offer Swiss traditional cuisine with a modern touch. We use seasonal products from local suppliers to create delicious meals served in a homely atmosphere.

## Turbinenstube

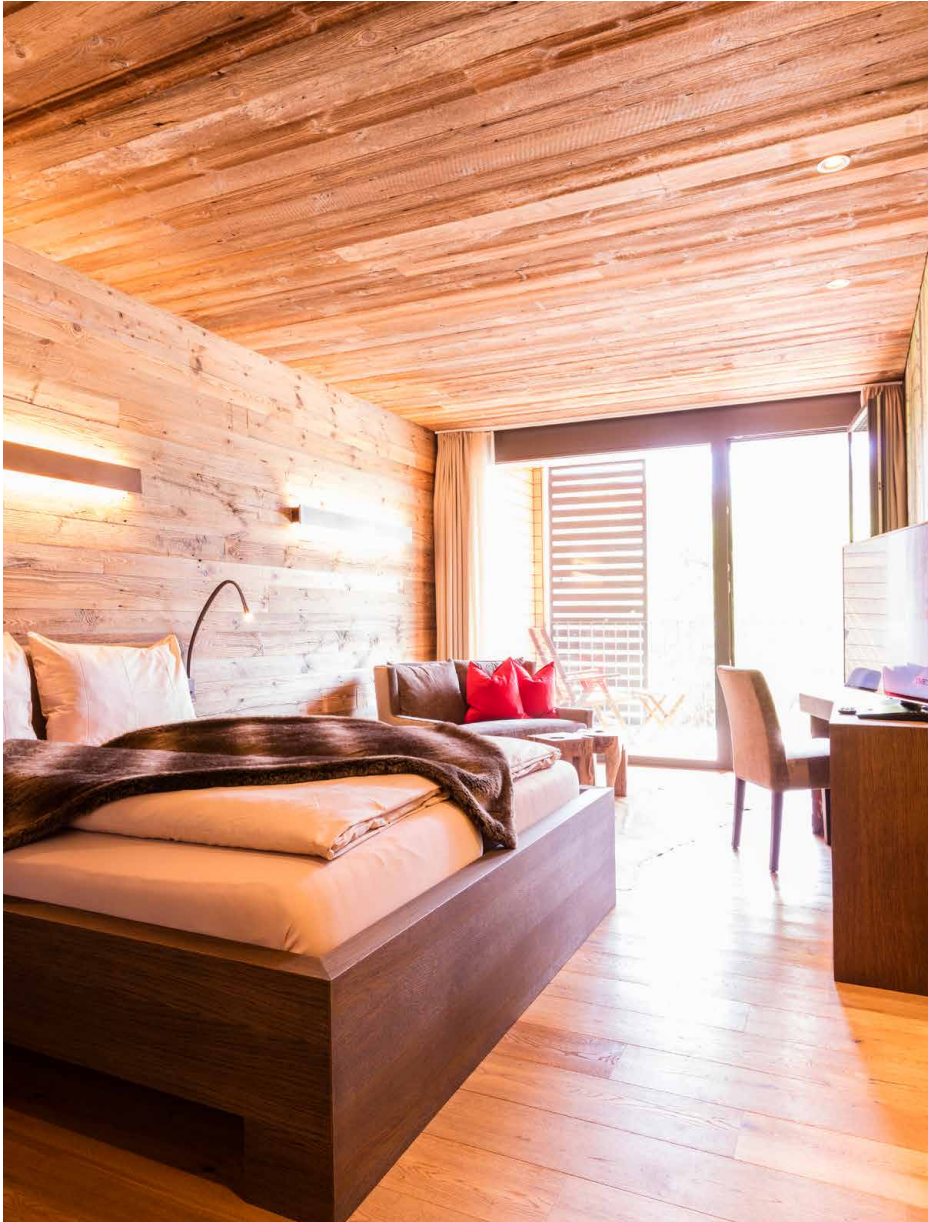


Try our delicious burgers with home-made buns or choose from many vegetarian options – there is something for everyone!

### Exklusiv

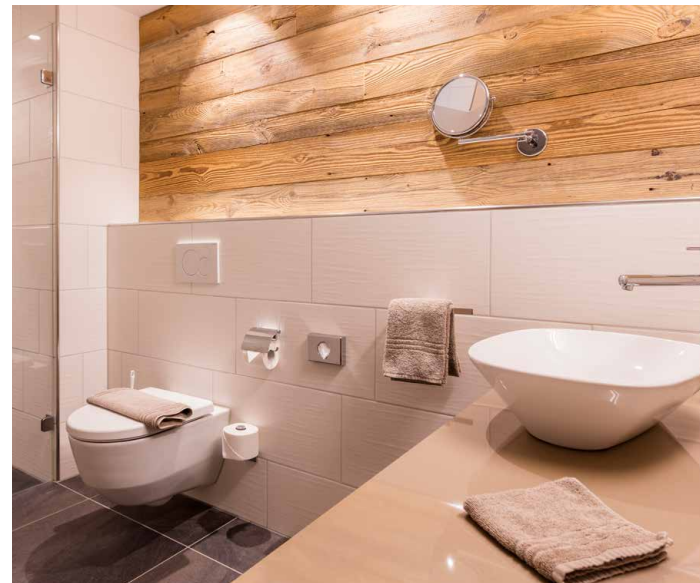
«Thaigarden» and «Turbinenstube» can be hired exclusively for our private or corporate event. We look forward to your enquiry!

# Sleep in the countryside



The riverside offers 96 hotel rooms – 44 modern spacious rooms in the main building which offer a view of the beautiful countryside. Additionally there are 52 Lodge rooms in the newly built riverlodge building.

The Lodge rooms (38 m<sup>2</sup>) feature natural materials, wooden elements and a balcony overlooking the river Glatt.



## 96 hotel rooms

- 52 Lodge rooms, 38 m<sup>2</sup>
- 38 Comfort rooms, 36 m<sup>2</sup>
- 4 Deluxe rooms, 45m<sup>2</sup>
- 2 Junior Suites, 55 m<sup>2</sup>

# Active or relaxing – your individual team activity



Our exclusive location in the countryside helps to create a varied meeting agenda with numerous team activities in and around the hotel.

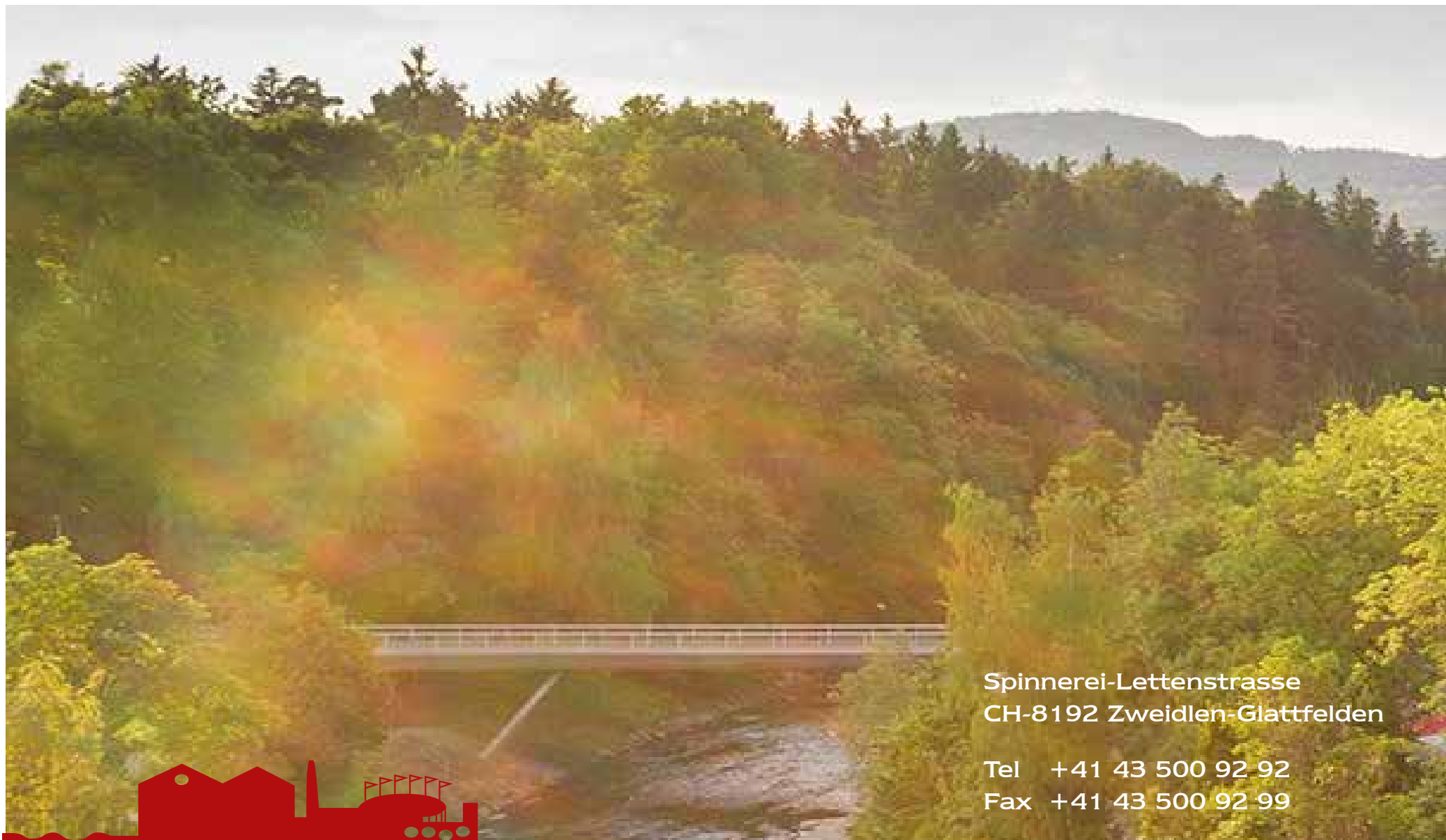
Enjoy the idyllic Zurich lowlands by bike, discover the exciting world of dragon boat racing or hit the bull's eye during a dynamic archery lesson.

We offer a wide range of tailor-made team building activities in cooperation with professional event agencies. Get in touch with us!



## Team activity

Search activities by category on our website  
[riverside.ch](https://www.riverside.ch)



Spinnerei-Lettenstrasse  
CH-8192 Zweidlen-Glattfelden

Tel +41 43 500 92 92  
Fax +41 43 500 92 99



**riverside**

Seminar- und Eventhotel

[seminare@riverside.ch](mailto:seminare@riverside.ch)  
[www.riverside.ch](http://www.riverside.ch)